



12808 W. Hampton Avenue • Butler, WI 53007
(262) 781-5195 • (262) 781-7870 fax • www.butlerchamber.org

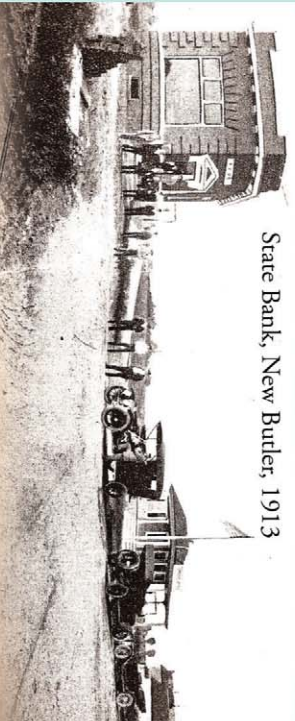


Japan Butler Wisconsin

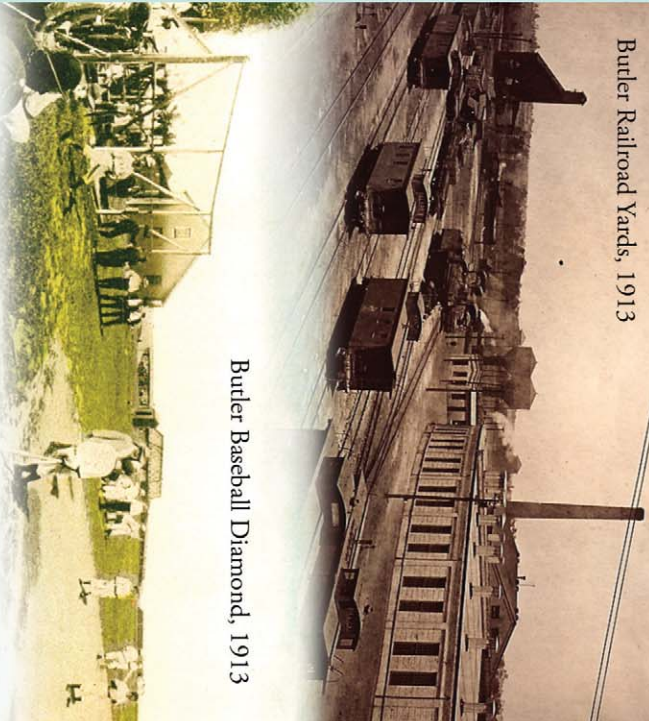


Historic Butler, WI

State Bank, New Butler, 1913



Butler Railroad Yards, 1913



Butler Baseball Diamond, 1913

Churches serving the Butler Community:

- St. Agnes Church (262) 781-9521 • stagnes007@archmil.org
- Immanuel Lutheran Church (262) 781-7140 • immanuelbrookfield.org
- Milwaukee Baptist Church (262) 783-4433 • milwaukeebaptistchurch.org



BUTLER TOOL, INC.
4731 NORTH 125TH STREET
BUTLER, WI 53007
(262) 781-9502
(262) 781-2983 FAX
WWW.BUTLERTOOL.COM
CUSTOM CNC & CONVENTIONAL MACHINING
MACHINE DESIGN & BUILD SINCE 1945

2 • City • E-5

Butler, a village of 1,886 residents, is a community of tree-lined streets, homes and small businesses nestled between Milwaukee and Waukesha Counties. The Village was incorporated in 1913 and is named for the Butler Yards of the Chicago & North Western railway, which bought the land for the Yards from the early settlers. From early on Butler was tied to the railroad and it is a very real part of its history. Butler is a small (8 of a square mile), but very livable community. Families can walk to Frontier Park, the Library or the retail area on Hampton Avenue.



History of the Butler Library
The Butler Library was established in 1964 by a small, but dedicated, group of women with 500 donated books and a small collection of furniture and equipment. Originally located in the front rooms of the Village Hall, it was later moved to a 1,500 square foot location in the same building. As the library activities increased and patronage grew, it became apparent that more space was needed.

The Friends of the Butler Library incorporated as a non-profit corporation in 1998. Research, planning and fund raising began. The new library opened December 1, 2008 and was gifted to the Village of Butler by the Friends of the Butler Library. The library is located at 12808 W. Hampton Avenue, (262) 783-2535.

The Butler Public Library is a member of Waukesha County Federated Library System. We loan books, audio books, magazines, videos and DVDs, and more! You'll also find digital books to download and 24/7 online reference service. Computers with the internet access and children's games are available.

Our library offers ongoing book discussion groups for adults. Story times are available for children ages 1-5. Programs are scheduled monthly for adults and youth including our annual community play.

Western States Envelope & Label
Proudly Supports the Butler Area Chamber of Commerce.

Building a Better Butler
Contact: Sue Hesselgrave • (414) 840-6602
www.buildingabetterbutler.com



Historic Clarke House
The George L. Clarke House, whose core dates to approximately 1850, was purchased by the Clarke family in 1870. It was moved from its original location on 124th Street to its present site in 1910 after George and Jennie Clarke sold a portion of their Wauwatosa farm to the Chicago & North Western Railway. After the move, the house was remodelled, and the east wing was added.

John Clarke, their eldest son, continued to live in the house until his death in 1992, a few days before his 94th birthday. The majority of his heirs agreed to donate the house to the Village of Butler for preservation and restoration. The Butler Community Foundation was organized in 1995 to fulfill that mission. The house has undergone extensive renovations. Museum exhibits include Butler's early history and its heritage as a railroad town. The house and museum are open to the public the first and third Sundays, May through October from 1-4 pm.

Frontier Park
Frontier Park is a 31 acre park which includes a community building, picnic area, nature trail, three ball diamonds, a tot lot, tennis, basketball and volleyball courts as well as horse shoe pits. Call the Village Hall at 783-2525 for information on the community building and on summer softball leagues.

Make-A-Wish Foundation® of WI
Make-A-Wish Foundation of Wisconsin grants the wishes of children with life-threatening medical conditions to enrich the human experience with hope, strength and joy. MAKEAWISH.org

40 YEARS EXPERIENCE

Available 24 Hours
Servicing Most Makes & Models
Locally Owned & Operated



RESIDENTIAL COMMERCIAL

- Burglary
- Fire
- 24 Hour Monitoring
- Access Control
- Cameras



www.central1security.com

414-466-9990

262-783-7500

4 • City • B-4

GREG WOJCZAK & ASSOCIATES, INC.

- Accounting
- Income Taxes
- Payroll
- Bookkeeping
- Business & Tax Consultants

12602 West Hampton Avenue
Butler, Wisconsin 53007-1706
Phone: (262) 783-7350
Fax: (262) 783-7385
Email: gwojczak@sbcglobal.net

1 • City • A-3

Buy-Sell-Trade
Fishing Tackle
Outboards

Greg's Cottage Fishing Emporium

Phone: (262) 783-1236
1-877-783-7350
Fax: (262) 783-7385
gregscottage@yahoo.com

Gregory Wojczak
12602 W. Hampton Ave.
Butler, Wisconsin
53007-1706

8 • City • D-4

Animal Motel

Since 1960
MasterCard VISA

Pet Care Services For Precious Pets

- Boarding
- Grooming
- Training (since 1946)
- Pet Shop
- Pet Travel Agency

The Gutknecht Family



13175 W. Silver Spring Road
1 Mile West of Hwy. 45

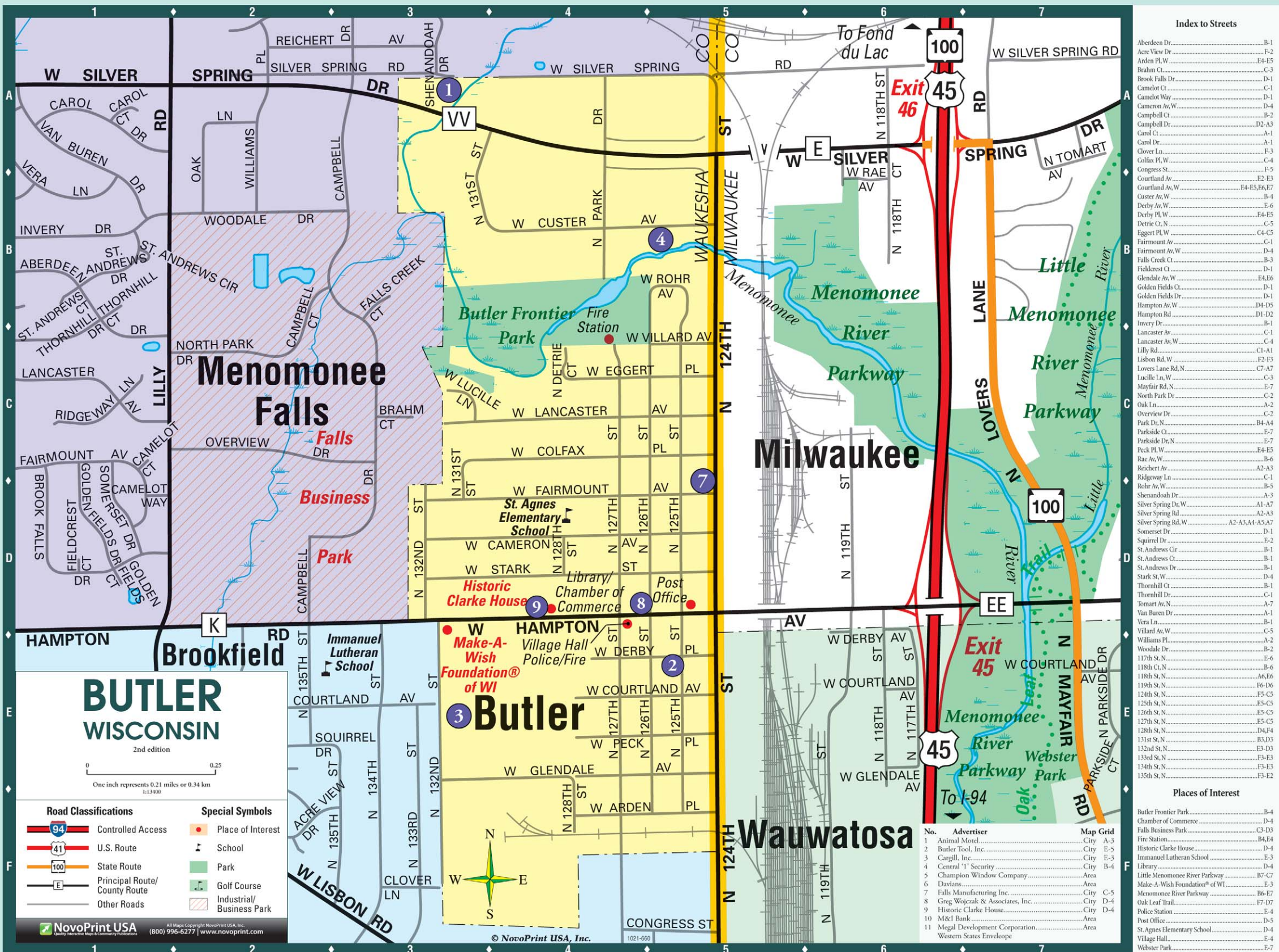
262 781-5200

Champion

FACTORY DIRECT SINCE 1953
WINDOWS • SIDING PATIO ROOMS

Champion Window, Siding & Patio Rooms
"We Build It. We Install It. We Stand Behind It."
(414) 616-8922

5 • Area



7 • City • C-5

9 • City • D-4

6 • Area

262-373-0439 fax: 262-373-0849
info@fallsmanufacturing.com
www.fallsmanufacturing.com
Falls Manufacturing, Inc.
4983 N. 124th Street
Butler, WI 53007
Manufacturers of Custom Metal Fabrications

11 • Area

Historic Clarke House
Local History and Railroad Museum
Open 1st and 3rd Sundays, May thru October
Private Tours by Appointment
12810 W. Hampton Avenue
Butler, WI 53007
(262) 783-4188

3 • City • E-3

Davians
Banquet & Conference Center
For Gatherings of Distinction at our place or yours.
N56 W16300 Silver Spring Drive
Menomonee Falls, WI 53051
p 262.781.3333
f 262.781.1122
www.davians.com

10 • Area

MEGAL
DEVELOPMENT CORPORATION
GENERAL CONTRACTORS • DEVELOPERS
12650 West Lisbon Road
Brookfield, Wisconsin 53005-1891
Phone (262) 781-8970 • Fax (262) 781-9775

Cargill
"Major Butler Employer Providing Competitive Wages and Benefits"
4700 N. 132nd St. • Butler, WI 53007
Phone (262) 781-2400 • Fax (262) 781-7631

Proud to support the **community**
Brookfield 3155 N 124th St • 262-783-1094
Personal | Business & Commercial | Wealth Management
M&I BANK
Member FDIC. ©2010 Marshall & Ilsley Corporation 10-093-011